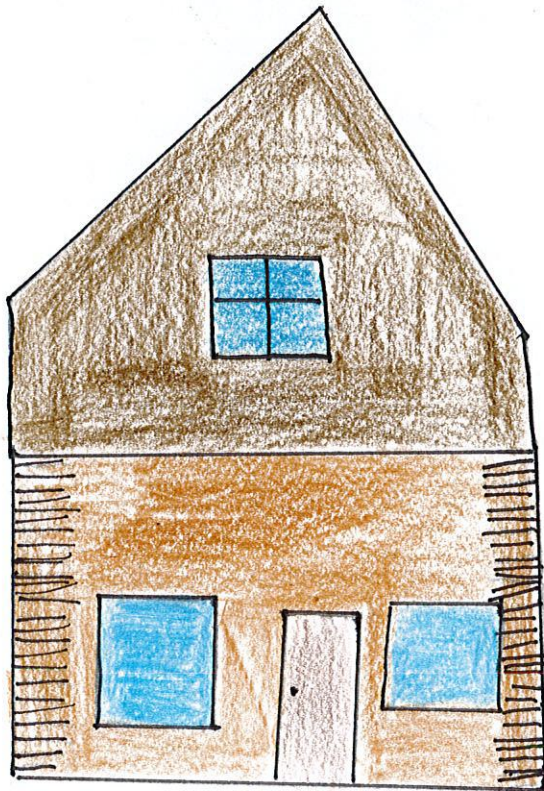


The Division Farmer

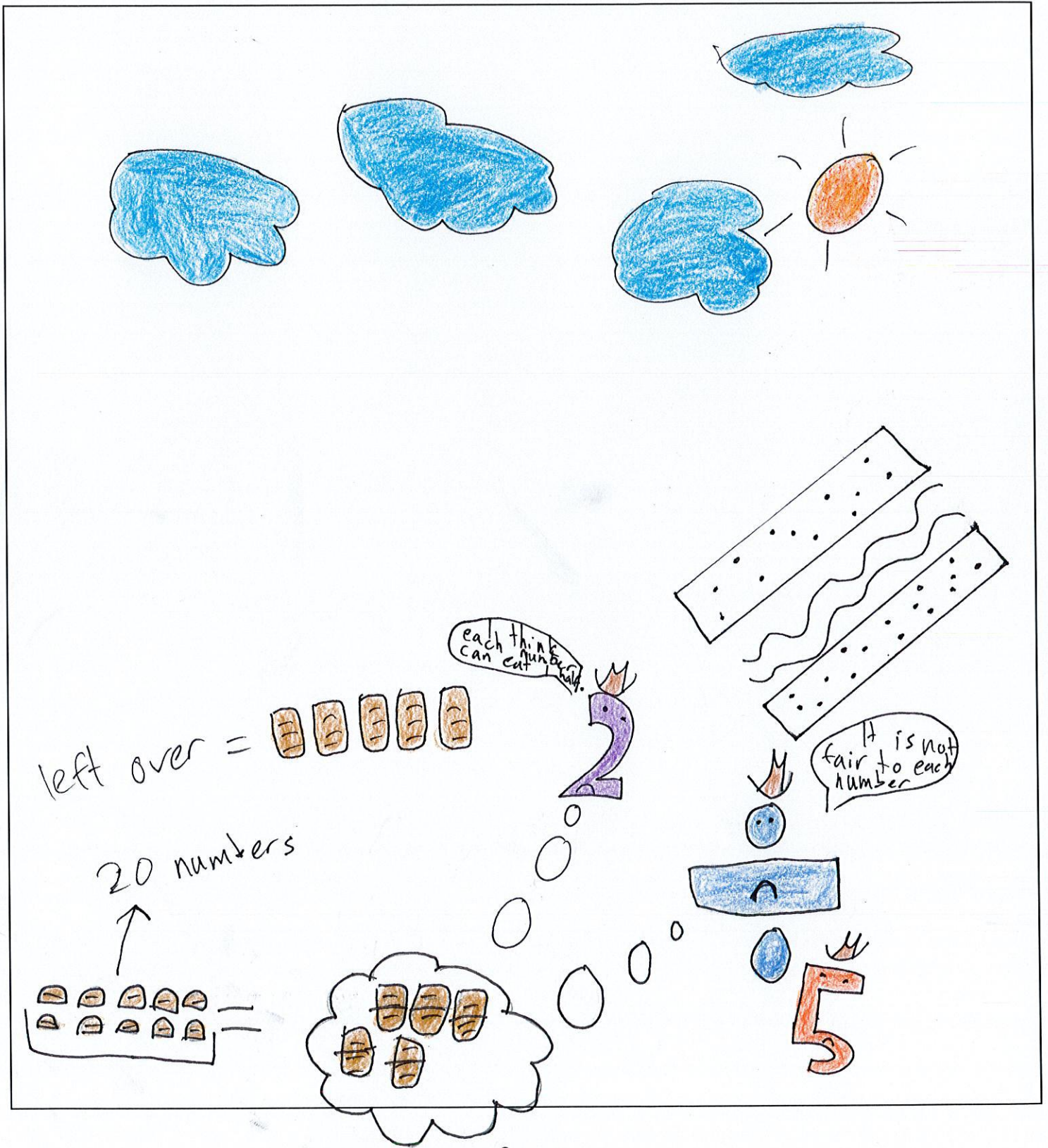
By Julian Park
(Santa Sabina College)



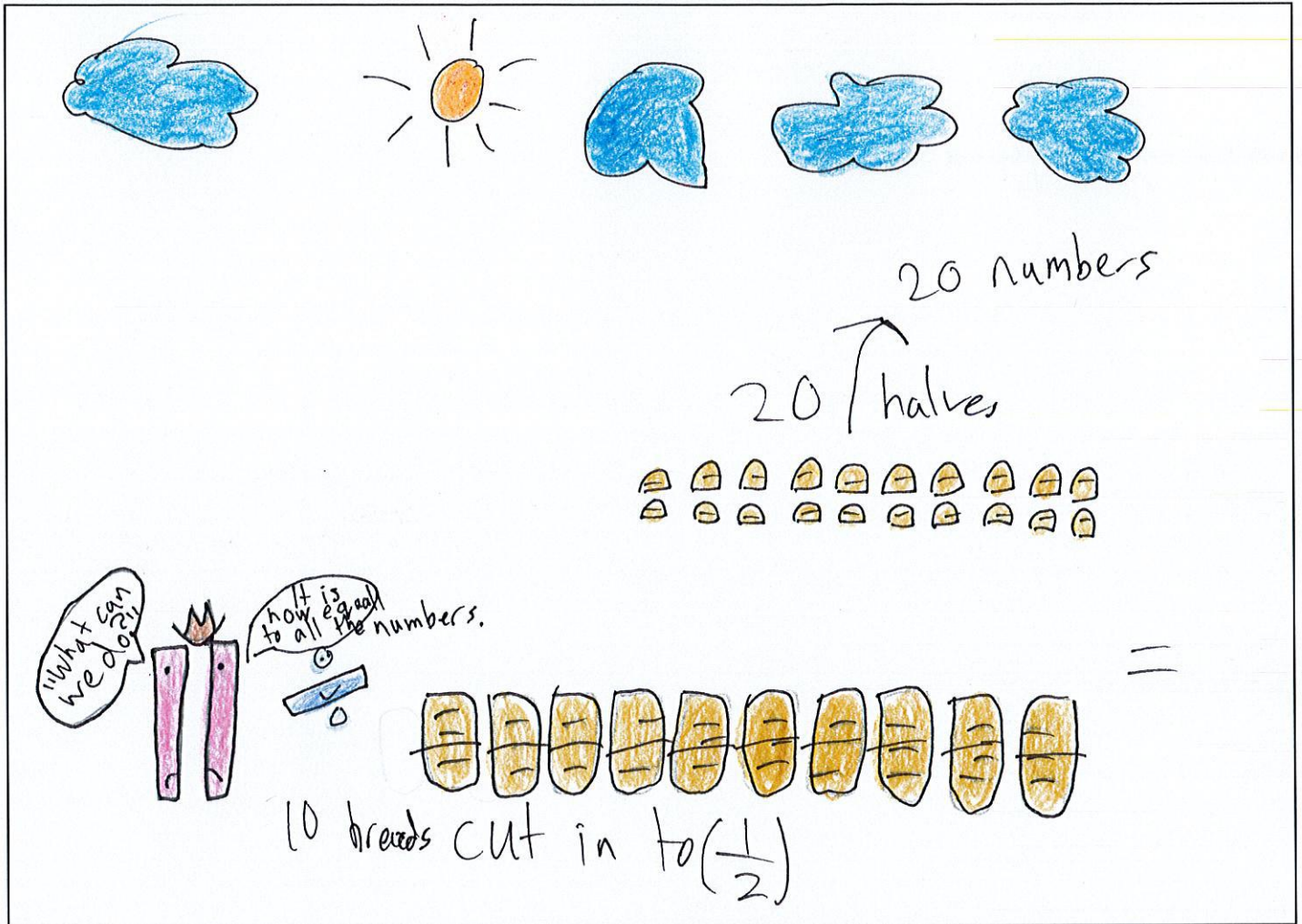
Hello my name is division and I live on a farm with the 0-20 numbers and they are my friends. We all make bread everyday so we are very busy. We have lots of work to do, we need to feed all the animals, plant all the seeds and make more farms. We always eat bread made from the plants and we get very hungry.



"Oh no!" said division, we don't have enough food for the 20 numbers and they are all hungry. We only have 10 breads. I think we can cut 5 breads into halves and leave the other 5 breads as wholes. "I think each number can eat 1 half," said 2. "But it is not fair for each number."

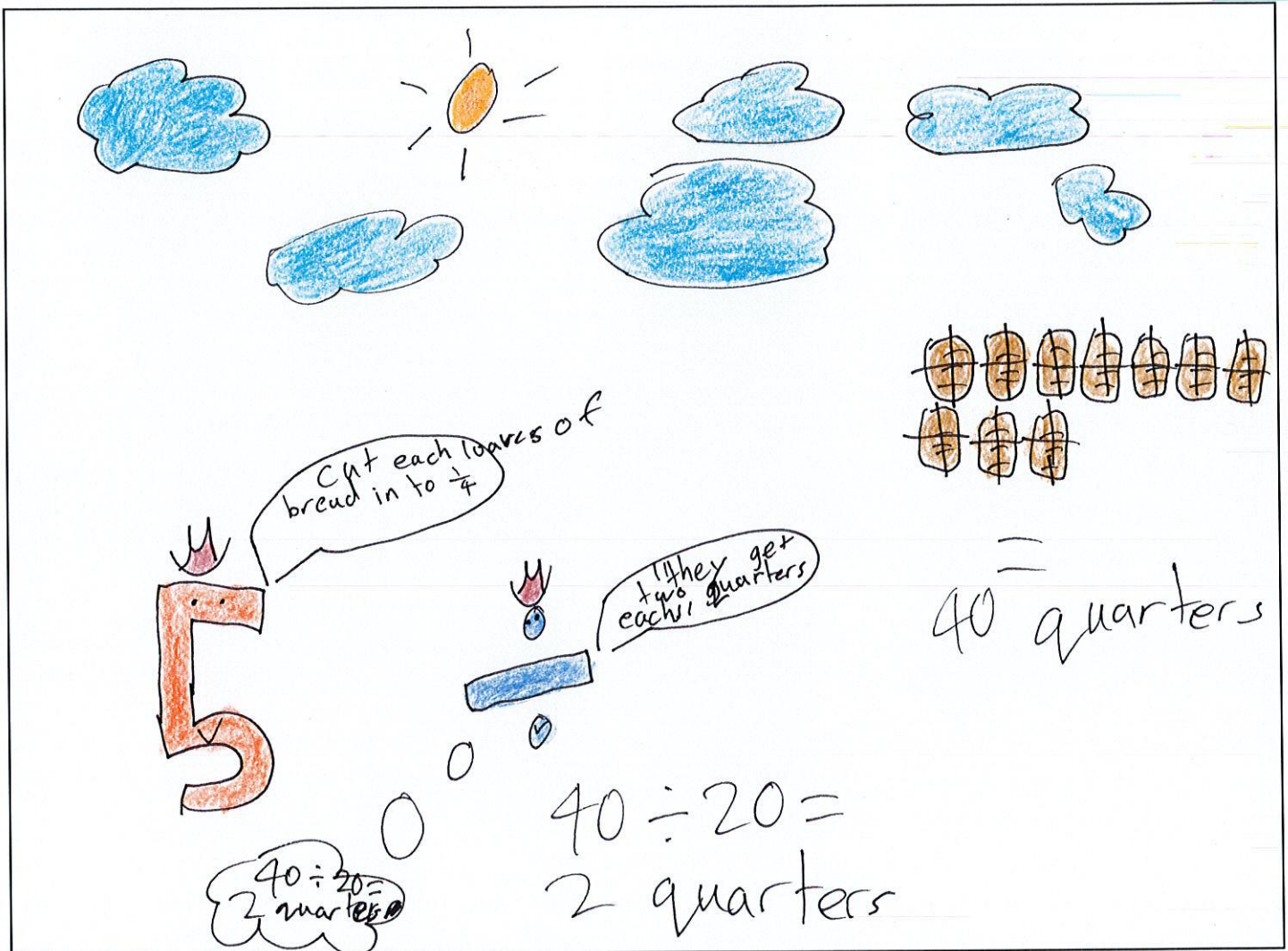


"What can we do?" 11 said. "What if we cut all the 10 breads into halves and eat half each. All the numbers will get half a bread."



Number 5 said, "What if we cut all of the loaves of bread into quarters and share it equally."

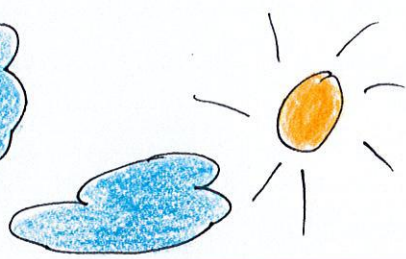
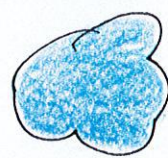
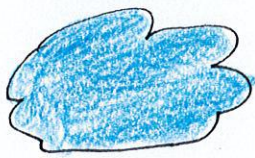
That means they can each get 2 quarters each. $40 \div 20 = 2$ (quarters)



"We can cut all of the loaves of bread into sixths," 18 said.



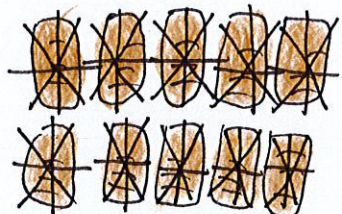
"Also we can cut each bread into eights" 20 said. $80 \div 20 = 4$ Then all the 20 numbers will get 4 eighths each and we will eat equally."



$80 \div 20 = 4$
"so we get 4 eighths
4 eighths each"



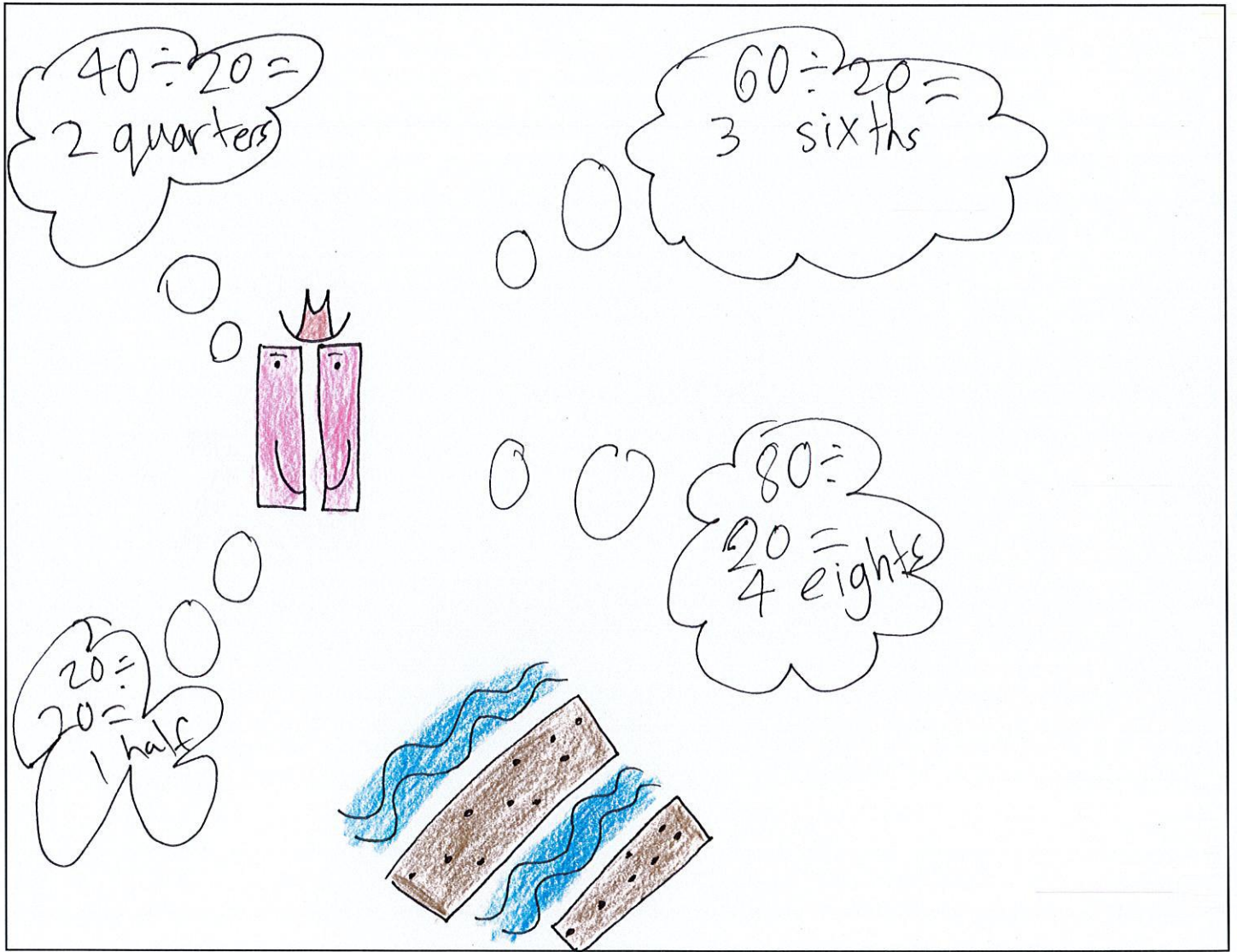
$80 \div 20 = 4$
= 4 eighths



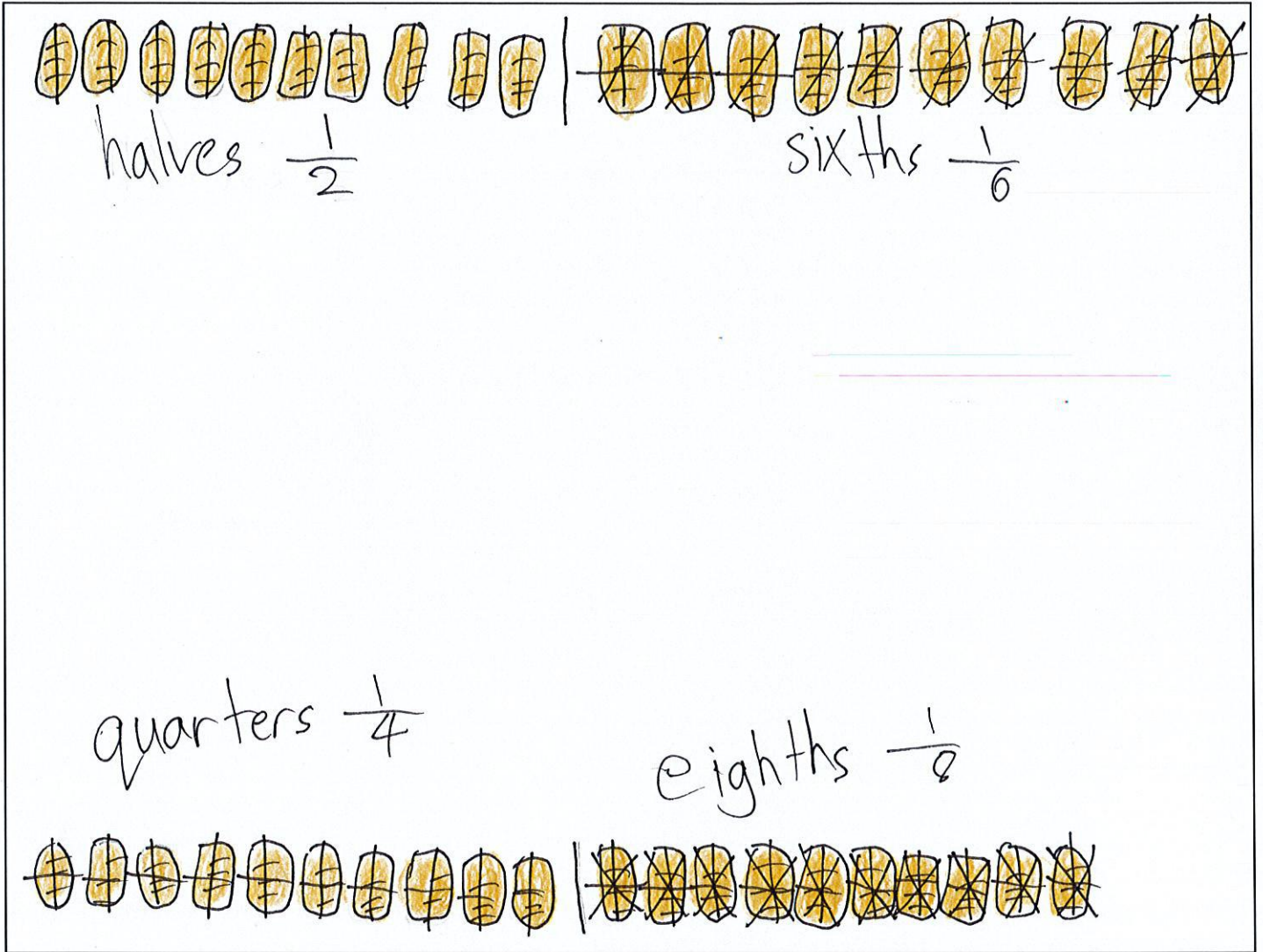
=

80 eighths

"But, if we use all these great strategies we will all each get the same amount," 7 said. "Whatever we choose it will all be the same amount," 11 said.



Now we know that we can cut the 10 loaves of bread into either halves, quarters, sixths and eighths this means each person would get the same amount. So it is equal for everyone.



BLURB

This book divides foods into halves and there were 20 numbers that are 1-20 numbers and they didn't have enough food for all the numbers so they divided into different fractions.

ABOUT THE AUTHOR

My name is Julian Park
I am 8 years old
My school is Santa Sabina College
It is located in Australia Sydney

I liked division because it is related to fractions which means division is like halves, quarters, sixths and eighths. It is dividing things or foods.